



SUSTAINABLE, GENERATIONAL  
PIECES DESIGNED TO LAST

— THE —  
LOOKBOOK

[compartmenta.com](http://compartmenta.com)



# VASI COLLECTION

## CAST IRON TABLE BASE



- 2-leg configurations (photo 61" total base length)
- Leg dimensions: 28"w x 27.75"h x 2.5"t
- Total base weight: 204 lb.-222 lb.
- Cast iron treated for rust prevention
- Charcoal Grey with clear satin finish

This base collection is fully scalable and starts with 2-leg configurations for 5 foot tops. These tables are expandable to virtually any length by using additional legs and sets of connection bars that are available in various lengths. Indoor and outdoor use.

Easy to assemble.

### LEG STYLE OPTIONS:



Style 1b



Style 2



Style 3



Style 4b



Style 6

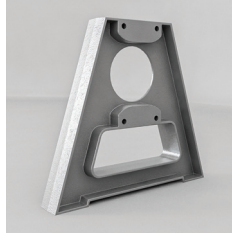
The last tables you'll ever need...or want.



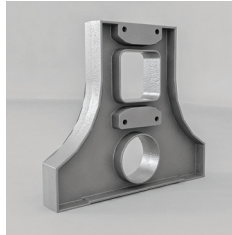
# JUGGERNAUT COLLECTION

## MODULAR CAST IRON CRANK TABLE BASE

### LEG STYLE OPTIONS:



CT-1

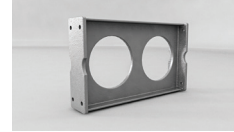


CT-2

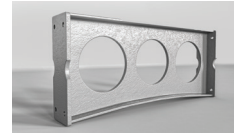


CT-4

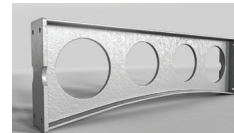
### BRIDGE OPTIONS:



SA2  
52" total base length  
(2-leg configuration  
ideal for 6 ft. top)



SA3  
60" total base length  
(2-leg configuration  
ideal for 7 ft. top)



SA4  
72" total base length  
(2-leg configuration  
ideal for 8 ft. top)

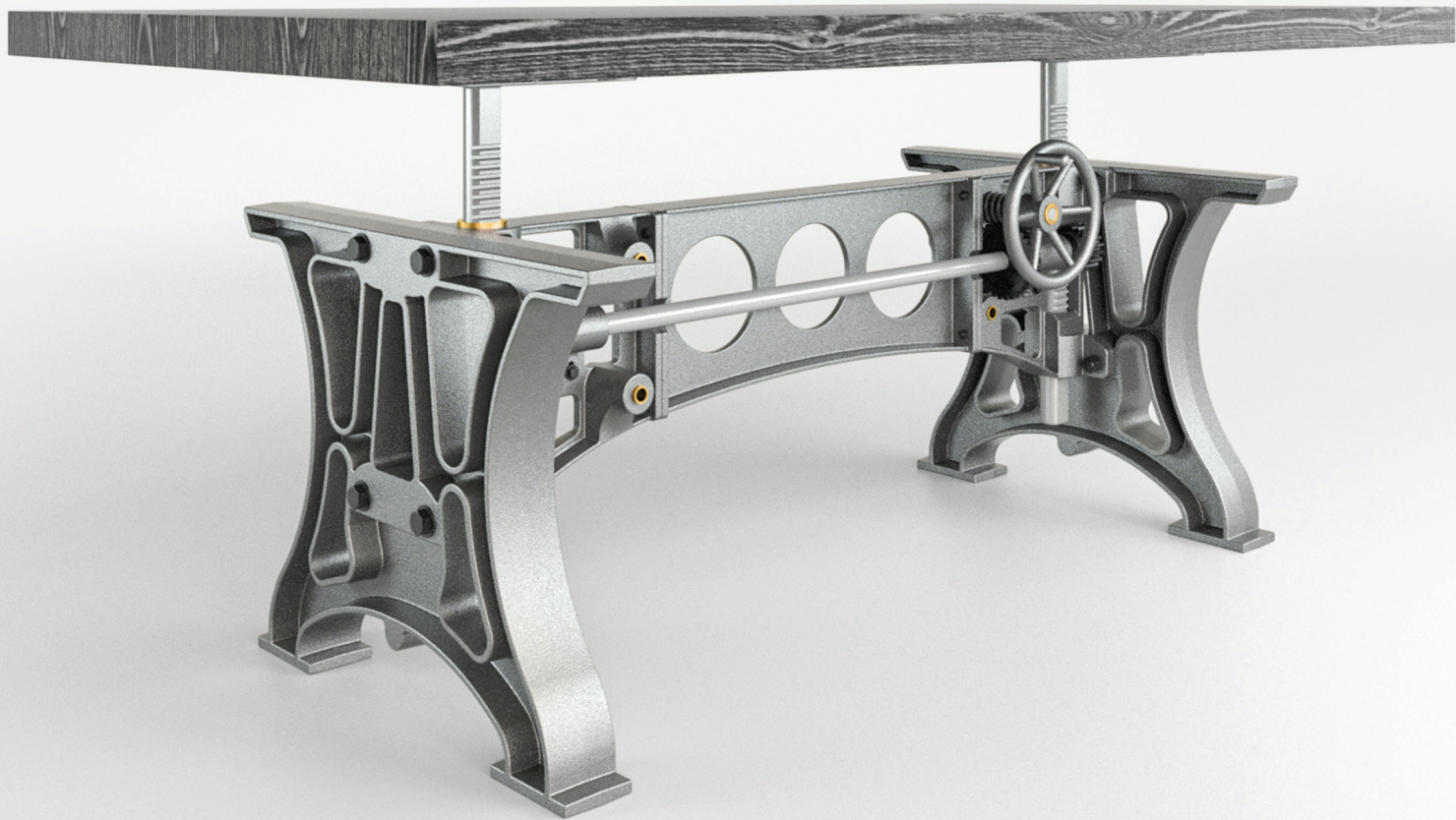


- 2-leg configuration (photo - 60" total base length)
- Leg dimensions: 28"w x 25"h x 4"t
- Total base weight: 425 lb.
- Cast iron treated for rust prevention
- Charcoal Grey with clear satin finish
- Features 100% brass accent components

Fully modular and scalable gear-operated crank table system, treated with rust prevention coating. Indoor and outdoor use.

Each bridge component can be used to extend the length of the base to accommodate multi-leg configurations, thus a range of configurations are possible including round tops, conference tables, L-Shape and U-shape configurations.

Shipped with larger components pre-assembled. Easy to assemble.



---

# TOPS

## WOOD STRAIGHT EDGE SLAB AND CONCRETE



- Acacia wood in Charcoal and Modern Neutral
- Concrete slab in Charcoal
- Currently stocking: 84"l x 39"w x 2"t

Our collection of Acacia and related sub-species tops take on deep and contrasting grain patterns.

We finished these pieces in a satin finish for a more sleek, contemporary look, and matches our collection of cast iron bases in refined appearance.

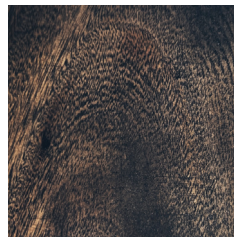
Initial collection consists of seven foot long pieces with a robust 39 inches in width and 2 inches thick for best use for dining or office configurations.

Each carefully selected wood slab has been sustainably harvested from plantations in Southeast Asia and Central America. Our concrete tops are shaped and constructed with a proprietary blend of materials for weight savings and environmental sustainability.

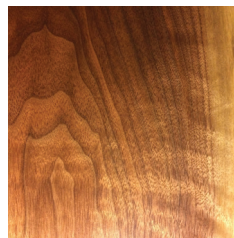
### TOP OPTIONS:



Charcoal Concrete Slab



Charcoal Wood Slab



Modern Neutral Wood Slab

---

## A NEW AMERICAN ROMANCE BETWEEN HEAVY METAL AND FINE ART

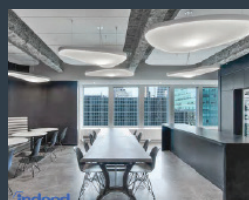
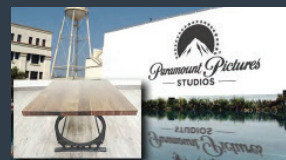
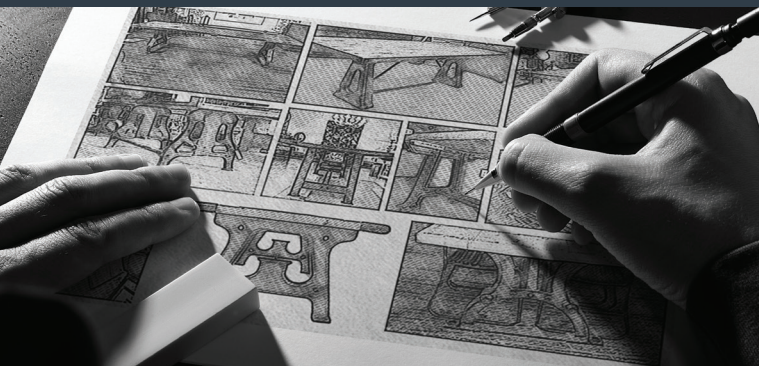
Compartment | A serves as a designer, curator and distributor of collections whose aesthetic draws significantly on the core inspiration of modernism and industrial style.

Our furniture, fixtures, fine art, and collectibles are inspired by blending modern shapes with a historical perspective. The results are unique pieces with a permanence intended to be passed on to the next generation of your family.

We are firmly centered on building our collections using environmentally sound materials and methods.

Optional functionality, high form engineering, fine art sensibilities and complete value inspire our work in any embodiment it takes on.

Over the years we have earned major brand trust working with a wide variety of private clients, designers, and industry leaders such as Paramount Studios, Clark Shoes, Dr. Martens, the NBA, Indeed and Boulevard Brewing Company among many more.



## FOREVER WARRANTY

Some things are just meant to be done right the first time.

Through craft and material, we build things that will outlast all of us.  
Compartment | A guarantees our products against craftsmanship and defects  
for the length you own them...and for the next generation too.



— FOR MORE INFORMATION —

Visit us at [compartmenta.com](http://compartmenta.com)  
or email [info@compartmenta.com](mailto:info@compartmenta.com)

480.565.7848

COMMERCIAL – HOSPITALITY – ARCHITECTS – INTERIOR DESIGN